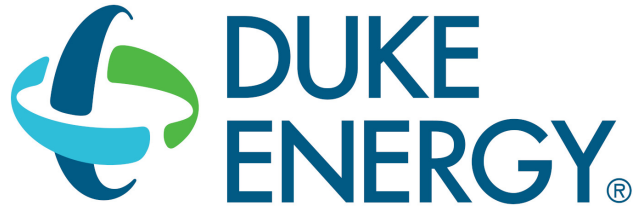




Best Practices Identified at the
**UAA Indiana
Safety Summit
July 12 & 13, 2023**



An **AEP** Company

BOUNDLESS ENERGYSM



Thank you to
our
Platinum
Sponsor!



Thank you
to our AV
Sponsor!



TOWNSEND



Thank you
to our Gold
Sponsors!



Thank you
to our Silver
Sponsor!

Thank you to
our Bronze
Sponsors!



**Welcome and Public Service Video
Jeff Hagfors; Duke Energy
&
Doug Thacker; Indiana Michigan Power**



“Keeping the Power Flowing”

Teams of utility arborists work in tandem from the air and ground to prevent outages and keep the electricity flowing.



Trees Under Tension

Tim Walsh; The Davey Tree Expert Company

For inquiries on this talk please contact
Tim Walsh directly [here](#)



Distracted / Defensive Driving Safety

Sogand Hasanzadeh (Purdue), Sean Lee
(Purdue), and Michael Lane (INDOT)

- <https://www.nhtsa.gov/risky-driving/distracted-driving>



Best Practices & Lessons Learned

First Aid while in a Tree: Dewy Goss; Townsend Tree

- Self care before job site care
 - Are YOU fit for duty
 - Not hung over, well rested, hydrated and how is your mental health that day
 - How is the crew looking that day



Best Practices & Lessons Learned

First Aid while in a Tree: Dewey Goss; Townsend Tree

- First Aid Kits that are personal
 - Assess the crew and individual health needs
 - Allergies to bees and can you use epi pen
 - Do you have someone with seizure disorders and do you know how to handle a seizure
 - Share your personal health info
 - If an electrical hazard or other overhead hazard no rescue shall be attempted
 - Steps after you administered first aid
 - Hospital? 911? What are you doing next?



Best Practices & Lessons Learned

First Aid while in a Tree: Dewey Goss; Townsend Tree

- Off hand training
 - Train to lower yourself down with your non dominant hand
 - Train to set up your work site
 - Set yourself up for success
 - Leave an area clear in case of emergency

Best Practices & Lessons Learned

Live Line Demo: Mark Kimbrough & Aaron Brown; Townsend Tree

- The starting & stopping of electron flow through the length of a conductive path is **virtually instantaneous** (speed of light - 186, 000 mps) from one end of a conductor to the other.
 - **Critters**
- Direct/Indirect contact- Both are likely fatal
- Entry wound/exit wound- Extreme injuries; pictures
- Step Potential; Concentric rings radiating from point of contact with earth. Can extend in excess of 60 feet.



Best Practices & Lessons Learned

Live Line Demo: Mark Kimbrough & Aaron Brown; Townsend Tree

- Conducive tools/Non-conductive tools; clean dry?
- MAD; Qualified Line clearance/Must be working under contract with utility./If not, trained personnel are incidental.
- Back feed; Incorrect generator connection; voltage feeds back through transformer to primary voltage.
- Always maintain MAD



Best Practices & Lessons Learned

Live Line Demo: Mark Kimbrough & Aaron Brown; Townsend Tree

- Treat all wires as energized
- If you can't do the job safely, don't risk it.
- Remember, when electricity is involved, your life is on the line!
- Who do you do Safety for?



Best Practices & Lessons Learned

Live Line Demo: Mark Kimbrough & Aaron Brown; Townsend Tree



Best Practices & Lessons Learned

Live Line Demo: Mark Kimbrough & Aaron Brown; Townsend Tree



Best Practices & Lessons Learned

An App a Day: Bill Spencer; CNUC

- Use the right form of communication for the right situation
- Three top app take aways:
 - Streamline the apps you have
 - App Fatigue is real
 - Invest in quality of the app
 - Use email etiquette in your texts
 - No emojis
 - Do not use all caps
 - Be realistic of the life cycle of your app
 - Technology is always changing



Best Practices & Lessons Learned

An App a Day: Bill Spencer; CNUC

- Top apps to use:
 - Red Cross First Aid app
 - The OSHA Heat Index app
 - A Sound Meter app
 - SDS app
 - Great for fast access
 - Weather app
 - ARCOS



Best Practices & Lessons Learned

DOT Truck / Job Safety: Jase Walls; Altec

- Every truck should be equipped with proper paperwork
 - Maintain a dedicated binder that stays with the truck
- Checks can be random or specific
- Police can run the DOT # at any time which is tied to your vehicle history and can be justified cause for being pulled over at any time if your safety score is elevated.
- If 50% of the tire is deflated it is considered flat and will take the truck out of commission
- Turn signals out in the rear of the truck will put it out of service
- Turn signals out in the front of the truck are a violation

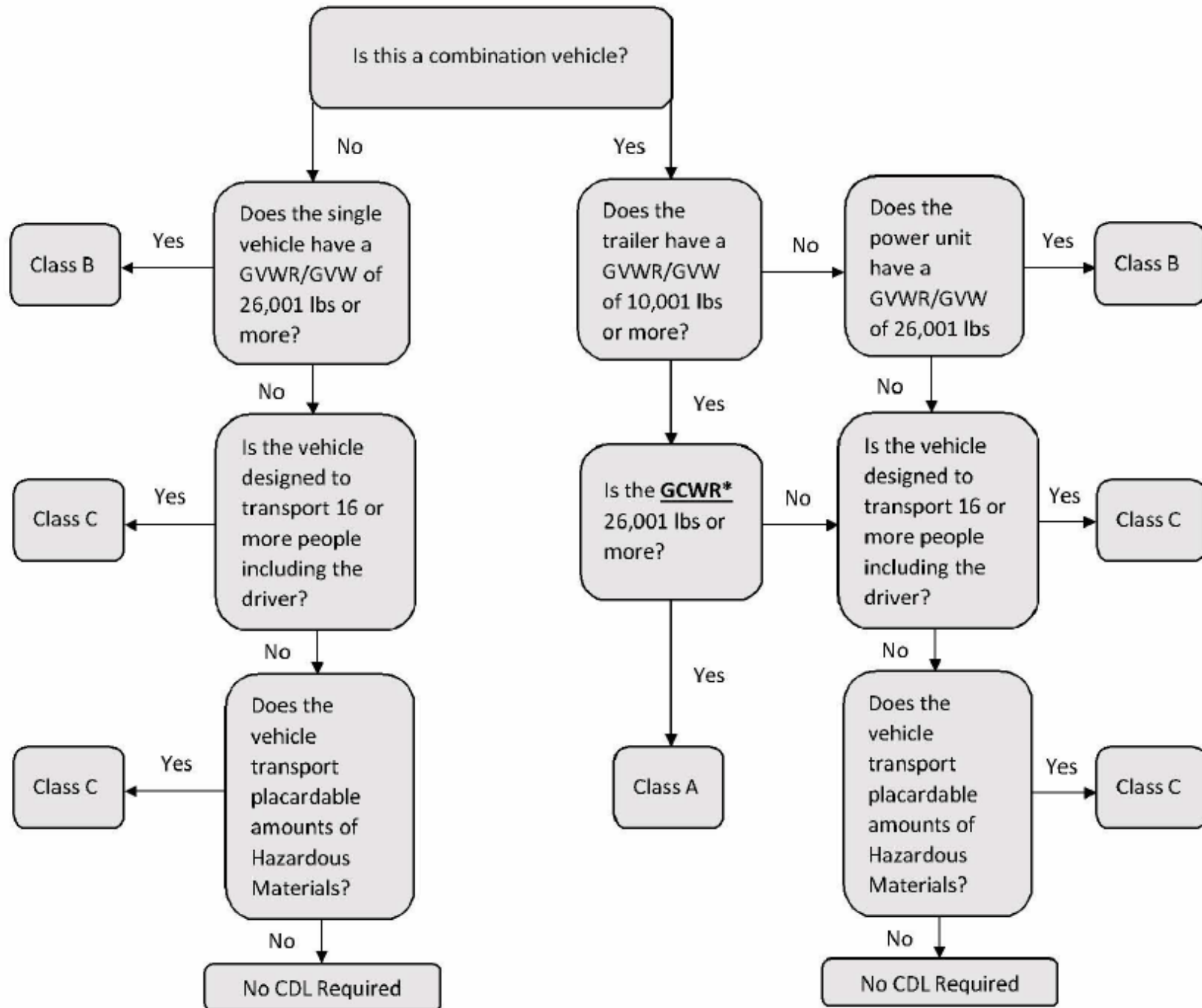


Best Practices & Lessons Learned DOT Truck / Job Safety: Tony Tribby & Jase Walls; Altec, Officer Kyle Hankins; IN State Police

- For DOT checks the top three items are:
 - Loose
 - Leaking
 - Lost/Missing Items



• In



Ittec

slides

***Gross combination weight rating(GCWR) is the greater of:**

- (1) A value specified by the manufacturer of the power unit, if such value is displayed on the Federal Motor Vehicle Safety Standard (FMVSS) certification label required by the National Highway Traffic Safety Administration, or
 - (2) The sum of the gross vehicle weight ratings (GVWRs) or the gross vehicle weights (GVWs) of the power unit and the towed unit(s), or any combination thereof, that produces the highest value.
- Exception: The GCWR of the power unit will not be used to define a commercial motor vehicle when the power unit is not towing another vehicle.

Best Practices & Lessons Learned

DOT Truck / Job Safety: Jase Walls; Altec

- Boom Safety & Inspection:
 - Tires are not to be lifted off the ground when setting out riggers
 - Boom is not to be flown if greater than a 5 degree incline in any direction
 - If any turn table bolts are loose/missing/broken it is to be red tagged
 - All pins must have snap rings on the crucial components of the truck



Best Practices & Lessons Learned

Tree Risk Assessment: Jon Ashment; Townsend Tree

- Spar Work
 - Proper amount of experience / Fit for duty
 - Pre job briefing is completed & reviewed by the team
 - During hazard assessment health & condition of the tree
 - Time of year as it applies to tree parts / weight
 - Potential Line kill
 - Constant communication amongst crew
 - If conditions are unsafe, refuse the work and document it on the PJB for future crews
 - Drop zone establishment
 - Inform property owners of work and drop zones
 - Continual tree assessment and update PJB if needed



Best Practices & Lessons Learned

Tree Risk Assessment: Jon Ashment; Townsend Tree

- Tools & Equipment
 - Choking systems where necessary / where no suitable tie in is available
 - Inspect equipment and tools based on work plan



Thank you again to all our Presenters and our
Sponsors!





An **AEP** Company

BOUNDLESS ENERGY™



TOWNSEND



Thank you
Sponsors!